

Chalkboard Notes



Friends of Gillespie County Country Schools, Inc.

Volume 9:

Issue: Fall 2020 QUARTERLY NEWSLETTER

All OPEN HOUSE dates until 2021 have been canceled. New schedule for 2021 will be released as soon as completed. See Friends website:
www.historicschools.org

design: nelda roessler

TIME TO COLLECT QUARTERS ENDOWMENT JARS

Turn in your Quarters to your school/ community club President OR contact Jane Woellhof at (830) 990-8059 for delivery or pick-up of your Quarters. First jar counted this fall had \$150.75 for Friends Endowment at The Community Foundation. We'll accept any coins or bills for the Endowment, just add them to the quarters! Endowment balance is \$16,000 with a \$20,000 goal. The Quarter collection began in 2018 as a way each member or school could put their change to work. Keeping your quarter jar on the kitchen cabinet reminds you to add your quarters as you have them.

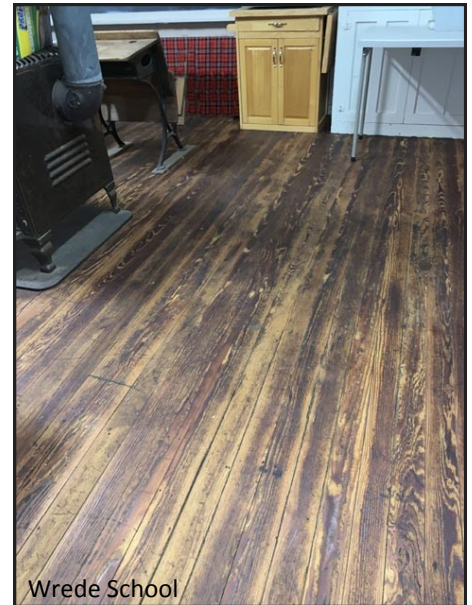


COMMON SCHOOLHOUSE FLOORS

Over the past two years to present, many school floors have been refinished. Maintenance is an important part of preservation work. These schools refinished floors during 2018 to Fall 2020: Meusebach Creek School; Crabapple Teacherage School Room; Wrede School; Rheingold Teacherage schoolroom and Schoolhouse; and Willow City Schoolhouse, all three rooms. These maintenance jobs required significant funds and volunteer work. Congratulations to all 12 school/ community groups for diligence in maintaining floors over the past two years.



Rheingold School



Wrede School

STATE FAIR OF TEXAS

Texas Heritage Trails, partnered with Friends to place Gillespie County Country Schools Driving Trail brochures in their 2020 Fair Booth. The Trails have hosted this booth for the last 20+ years. For 2020, they added a Corona-friendly State Fair of Texas Virtual Destination Days! Postings will run from Sept 25th -Oct 24th, just like the State Fair of Texas. Friends' brochures were in the booth and our message was also on the Texas Heritage Trail Regions Face Book page.

Texas State Fair honored Gillespie County Historic Schools on September 28th

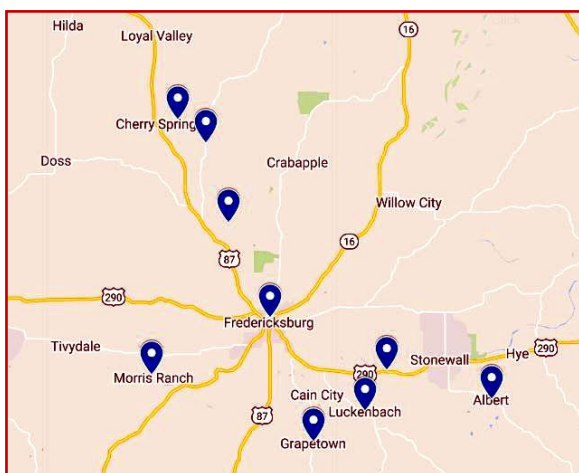


Archives & Artifacts Project

Jeanette Beckmann, Crabapple School, is shown with Evelyn Weinheimer at Gillespie County Historical Society Office, July 20, 2020. Three original early School Registers and Trustees Notebooks were placed with the Historical Society. Friends funded the scanning of these Crabapple documents by Dietel & Sons in 2019. The scanned documents are available from Friends GCCS Archives & Artifacts Project.



Texas Historical Markers relating to schools.



Friends Member-at-Large, Carolyn Sowell, Lubbock, TX, shared an article from Friends of the Texas Historical Commission News & Update-October, 2020 Issue: A Summer Preservation Scholars Program student, Lezlie Hernandez, researched and completed a list of historical schoolhouses across Texas and created a Google Map of the locations. Eight Gillespie County historical schools were listed and plotted on the map. Carolyn shared their website for your browser: <https://www.google.com/maps/d/u/0/viewer?mid=1VP-wlQp-t9pZMF7O4lYnWXq17HpleVZ4&ll=31.19025926607167%2C-100.30387700000001&z=6>

UNCOMMON SCHOOL US POST OFFICE:

Petersburg School served as a postal drop. The Crabapple School Teacherage was a US Post Office. Did other schools handle the US Mail?



Crabapple
School
Teacherage
US Postal
Drop

Texas Hill Country Wineries Guide & Map brochures were delivered to Friends. Twelve stacks, one for each historic school, are being distributed. Many of our historic country schools are neighbors to wineries and assist each other by trading brochures. Together we provide additional places to explore the Hill Country. Thank you to our good neighbors. See Friends ads: TEXASWINETRAIL.COM

Contact Directors-at-Large, Jane Woellhof at 830-990-8059 or Don Spraggins at 830-456-3956, to submit newsletter items.

The Friends of Gillespie County Country Schools, Inc. P.O. Box 55, Fredericksburg, TX 78624

Friends website: www.HistoricSchools.org

OUR MISSION: Preserving the past to enrich the future.

You receive this newsletter as a Friends' member or member-at-large. If you wish to unsubscribe, please e-mail Jane at jane423@austin.rr.com.